

Synonym

SIGLEC10,MGC126774,PRO940,Siglec10,SLG2

Source

Human Siglec-10 Protein, Fc (L117A, L118A) Tag(SI0-H5254) is expressed from human 293 cells (HEK293). It contains AA Met 17 - Thr 546 (Accession # [Q96LC7-1](#)).

Predicted N-terminus: Met 17

Molecular Characterization

Siglec-10(Met 17 - Thr 546) Q96LC7-1	Fc(Pro 100 - Lys 330) P01857-1
	L117A, L118A

This protein carries a Fc (L117A, L118A) tag at the C-terminus. The protein has a calculated MW of 84.6 kDa. The protein migrates as 100-115 kDa under reducing (R) condition (SDS-PAGE) due to glycosylation. Mutations (L117A, L118A/EU number: L234A/L235A) in human immunoglobulin G1 (hIgG1) Fc diminish binding to FcγRI leading to a significant reduction in ADCC and CDC in comparison to wild type human IgG1.

Endotoxin

Less than 1.0 EU per μg by the LAL method.

Purity

>95% as determined by SDS-PAGE.

Formulation

Lyophilized from 0.22 μm filtered solution in PBS, pH7.4 with trehalose as protectant.

Contact us for customized product form or formulation.

Reconstitution

Please see Certificate of Analysis for specific instructions.

For best performance, we strongly recommend you to follow the reconstitution protocol provided in the CoA.

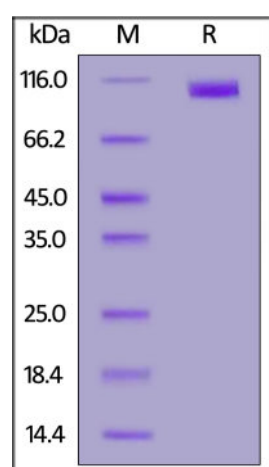
Storage

For long term storage, the product should be stored at lyophilized state at -20°C or lower.

Please avoid repeated freeze-thaw cycles.

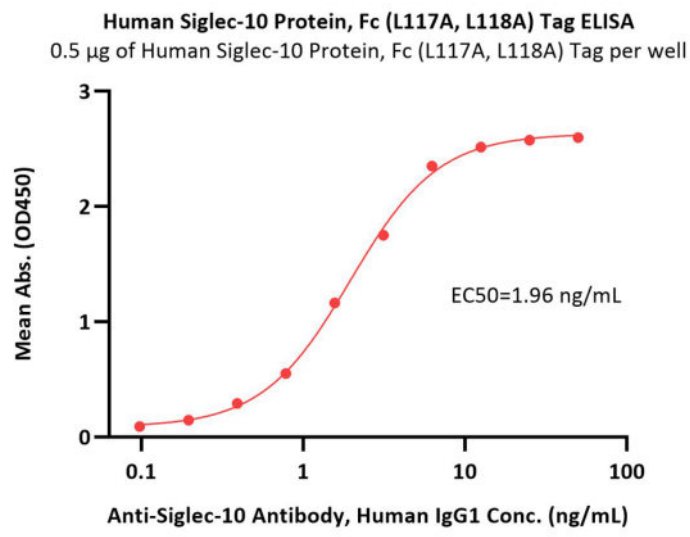
This product is stable after storage at:

- -20°C to -70°C for 12 months in lyophilized state;
- -70°C for 3 months under sterile conditions after reconstitution.

SDS-PAGE

Human Siglec-10 Protein, Fc (L117A, L118A) Tag on SDS-PAGE under reducing (R) condition. The gel was stained with Coomassie Blue. The purity of the protein is greater than 95%.

Bioactivity-ELISA



Immobilized Human Siglec-10 Protein, Fc (L117A, L118A) Tag (Cat. No. SI0-H5254) at 5 µg/mL (100 µL/well) can bind Anti-Siglec-10 Antibody, Human IgG1 with a linear range of 0.1-6 ng/mL (QC tested).

Background

The siglecs (sialic acid-binding Ig-like lectins) are a distinct subset of the Ig superfamily with adhesion-molecule-like structure. We describe here a novel member of the siglec protein family that shares a similar structure including five Ig-like domains, a transmembrane domain, and a cytoplasmic tail containing two ITIM-signaling motifs. Siglec-10 was identified through database mining of an asthmatic eosinophil EST library. The Siglec-10-VAP-1 interaction seems to mediate lymphocyte adhesion to endothelium and has the potential to modify the inflammatory microenvironment via the enzymatic end products.

Clinical and Translational Updates

Please contact us via TechSupport@acrobiosystems.com if you have any question on this product.