

CHO/Human CD64 Stable Cell Line (Low Expression) Development Service Data Sheet

CHO/Human CD64 Stable Cell Line (Low Expression)

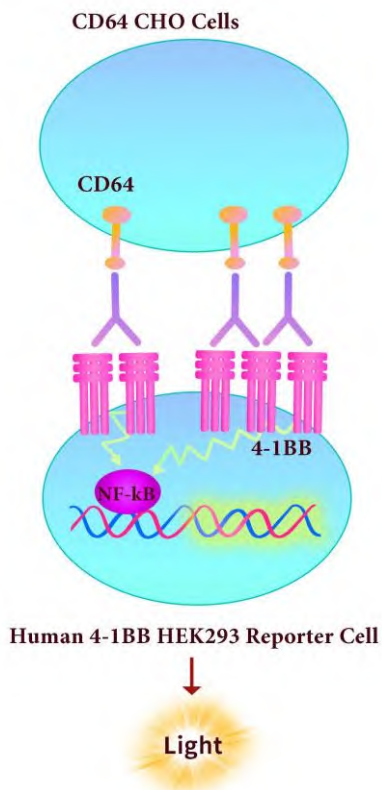
| Catalog No. | Size |
|---------------|--|
| SCCHO-ATP062L | 2 × (1 vial contains ~5×10 ⁶ cells) |

• Description

The CHO/Human CD64 Stable Cell Line was engineered to express full length human CD64 receptor (Gene ID: 2209), with different levels of CD64 expression (High, Medium, Low), which can be used to test agonist antibody whether in a CD64-dependent manner to strengthen the agonistic activity. When co-cultured with Human 4-1BB HEK293 Reporter Cell and anti-4-1BB agonist antibody, the anti-4-1BB antibody can be crosslinked, thereby strengthening 4-1BB pathway-activated luminescence.

• Application

- Useful for cell-based CD64 binding assay
- Useful for CD64-mediated crosslinking



CHO/Human CD64 Stable Cell Line (Low Expression) Development Service Data Sheet

• Cell Line Profile

| | |
|-------------------------------|--|
| Cell line | CHO/Human CD64 Stable Cell Line (Low Expression) |
| Host Cell | CHO |
| Property | Adherent |
| Complete Growth Medium | F-12K + 10% FBS |
| Selection Marker | Hygromycin (20 µg/mL) |
| Incubation | 37°C with 5% CO ₂ |
| Doubling Time | 22-24 hours |
| Transduction Technique | Lentivirus |

• Materials Required for Cell Culture

- F-12K Nutrient Mixture (Gibco, Cat.No.21127-022)
- Fetal bovine serum (CellMax, Cat.No.SA211.02)
- Hygromycin B (Invitrogen, Cat.No.10687010)
- Complete Growth Medium: F-12K + 10% FBS
- Culture Medium: F-12K + 10% FBS, Hygromycin (20 µg/mL)
- Freeze Medium: 90% FBS, 10% (V/V) DMSO
- T-75 Culture flask (Corning, 430641)
- Cryogenic storage vials (SARSTEDT, 72.379.007)
- Thermostat water bath
- Centrifuge
- Luna cell counter (Logos Biosystems, LUNA- II)
- CO₂ Incubator (Thermo, 3111)
- Biological Safety Cabinet (Thermo, 1389)

CHO/Human CD64 Stable Cell Line (Low Expression) Development Service Data Sheet

• *Recovery*

1. Thaw the vial by gentle agitation in a 37°C water bath. To reduce the possibility of contamination, keep the cap out of the water. Thawing should be rapid (approximately 2 minutes).
2. Remove the vial from the water bath as soon as the contents are thawed, and decontaminate by spraying with 70% ethanol. All the operations from this point on should be carried out under strict aseptic conditions.
3. Transfer the vial contents to a centrifuge tube containing 4.0 mL complete growth medium and spin at approximately 1000 rpm for 5 minutes.
4. Resuspend cell pellet with 5 mL complete growth medium and transfer the cell suspension into T-75 flask containing 10-15 mL of pre-warmed complete growth medium.
5. Incubate at 37°C with 5% CO₂ incubator until the cells are ready to be split.

• *Subculture*

1. Remove and discard culture medium.
2. Wash the cells once with sterile PBS.
3. Add 3 mL of 0.25% trypsin to cell culture flask. Place the flask at 37°C for 5-7 minutes, until 90% of the cells have detached.
4. Add 6.0 to 8.0 mL of culture medium and aspirate cells by gently pipetting.
5. Add appropriate aliquots of the cell suspension to new culture vessel.
6. Incubate at 37°C with 5% CO₂ incubator.

Subcultivation Ratio: A subcultivation ratio of 1:6 to 1:10 is recommended.

Medium Renewal: Every 2 to 3 days.

CHO/Human CD64 Stable Cell Line (Low Expression) Development Service Data Sheet

• *Cryopreservation*

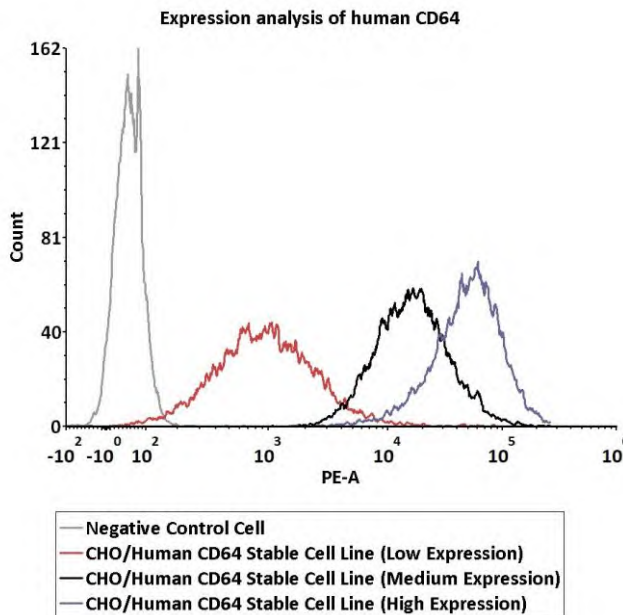
1. Remove and discard spent medium.
2. Detach cells from the cell culture flasks with 0.25% trypsin.
3. Centrifuge at 1000 rpm for 5 min at RT to pellet cells.
4. Resuspend the cell pellets with complete growth medium and count viable cells.
5. Centrifuge at 1000 rpm for 5 min at RT and resuspend cells in freezing medium to a concentration of 5×10^6 to 1×10^7 cells/mL.
6. Aliquot into cryogenic storage vials. Place vials in a programmable cooler or an insulated box placed in a -80°C freezer overnight, then transferring to liquid nitrogen storage.

• *Storage*

- **Product format:** Frozen
- **Storage conditions:** Liquid nitrogen immediately upon receipt

CHO/Human CD64 Stable Cell Line (Low Expression) Development Service Data Sheet

• Receptor Assay



| Catalog No. | Stable Cell Line | MFI for CD64 (PE) |
|---------------|---|-------------------|
| SCCHO-ATP062L | CHO/Human CD64 Stable Cell Line (Low Expression) | 905.19 |
| SCCHO-ATP062M | CHO/Human CD64 Stable Cell Line (Medium Expression) | 15478.72 |
| SCCHO-ATP062H | CHO/Human CD64 Stable Cell Line (High Expression) | 49904.52 |

Fig1. Expression analysis of human CD64 on CHO/Human CD64 Stable Cell Line by FACS. Cell surface staining using PE-labeled anti-human CD64 antibody was performed on CHO/Human CD64 Stable Cell Line with different expression levels: CHO/Human CD64 Stable Cell Line (Low Expression); CHO/Human CD64 Stable Cell Line (Medium Expression); CHO/Human CD64 Stable Cell Line (High Expression).

CHO/Human CD64 Stable Cell Line (Low Expression) Development Service Data Sheet

• *License Disclosure*

This reporter cell is provided for research use only. This license does not permit you to share, distribute, sell, sublicense, or otherwise make this reporter cell available for use to other laboratories, departments, research institutions, hospitals, universities, or biotech companies. The license does not permit modification of this reporter cell in any way. Inappropriate use or distribution of this reporter cell will result in revocation of the license. Modifications of this cell line, transfer to another facility, or commercial use of the cells may require a separate license and additional fees. AcroBiosystems does not warrant the suitability of this reporter cell for any particular use, and does not accept any liability in connection with the handling or use of this reporter cell.

• *Related Products*

| <u>Products</u> | <u>Cat.No.</u> |
|---|----------------|
| CHO/Human CD16a (158V) Stable Cell Line (Low Expression) Development Service | SCCHO-ATP059L |
| CHO/Human CD16a (158V) Stable Cell Line (Medium Expression) Development Service | SCCHO-ATP059M |
| CHO/Human CD16a (158V) Stable Cell Line (High Expression) Development Service | SCCHO-ATP059H |
| CHO/Human CD32b Stable Cell Line (Low Expression) Development Service | SCCHO-ATP060L |
| CHO/Human CD32b Stable Cell Line (Medium Expression) Development Service | SCCHO-ATP060M |
| CHO/Human CD32b Stable Cell Line (High Expression) Development Service | SCCHO-ATP060H |
| CHO/Human CD32a Stable Cell Line (Low Expression) Development Service | SCCHO-ATP061L |
| CHO/Human CD32a Stable Cell Line (Medium Expression) Development Service | SCCHO-ATP061M |
| CHO/Human CD32a Stable Cell Line (High Expression) Development Service | SCCHO-ATP061H |
| CHO/Human CD64 Stable Cell Line (High Expression) Development Service | SCCHO-ATP062H |
| CHO/Human CD64 Stable Cell Line (Medium Expression) Development Service | SCCHO-ATP062M |
| CHO/Human PD-L1 Stable Cell Line (Low Expression) Development Service | SCCHO-ATP077L |
| CHO/Human PD-L1 Stable Cell Line (Medium Expression) Development Service | SCCHO-ATP077M |
| CHO/Human PD-L1 Stable Cell Line (High Expression) Development Service | SCCHO-ATP077H |