

Human MAT2A Protein, His Tag (active enzyme)

Catalog # MAA-H51H3



BIOSYSTEMS
Acro
Surprise Inside!

Synonym

MATA2, MATII, SAMS2

Source

Human MAT2A Protein, His Tag(MAA-H51H3) is expressed from E. coli cells.

It contains AA Asn 2 - Tyr 395 (Accession # [P31153-1](#)).

Predicted N-terminus: Met

Molecular Characterization

Poly-his MAT2A(Asn 2 - Tyr 395)
P31153-1

This protein carries a polyhistidine tag at the N-terminus.

The protein has a calculated MW of 45.5 kDa. The protein migrates as 45-50 kDa when calibrated against [Star Ribbon Pre-stained Protein Marker](#) under reducing (R) condition (SDS-PAGE).

Endotoxin

Less than 1.0 EU per µg by the LAL method.

Purity

>90% as determined by SDS-PAGE.

Formulation

Supplied as 0.2 µm filtered solution in 50 mM Tris, 150 mM NaCl, pH8.0 with glycerol as protectant.

Contact us for customized product form or formulation.

Shipping

This product is supplied and shipped with dry ice, please inquire the shipping cost.

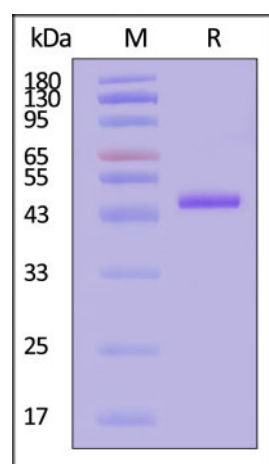
Storage

Please avoid repeated freeze-thaw cycles.

This product is stable after storage at:

- The product MUST be stored at -70°C or lower upon receipt;
- -70°C for 3 months under sterile conditions.

SDS-PAGE



Human MAT2A Protein, His Tag on SDS-PAGE under reducing (R) condition.

The gel was stained with Coomassie Blue. The purity of the protein is greater than 90% (With [Star Ribbon Pre-stained Protein Marker](#)).

Bioactivity

Measured via hydrolysis of ATP during synthesis of S-adenosylmethionine.

The specific activity is >200 pmol/min/µg (QC tested).

Background

The protein encoded by this gene catalyzes the production of S-adenosylmethionine (AdoMet) from methionine and ATP. AdoMet is the key methyl donor in cellular processes. [provided by RefSeq, Jun 2011]

Clinical and Translational Updates

Discounts, Gifts,
and more!



➤ www.acrobiosystems.com

9/10/2024

Human MAT2A Protein, His Tag (active enzyme)

Catalog # MAA-H51H3



Discounts, Gifts,
and more!



www.acrobiosystems.com