



### Synonym

LAG3,CD223,FDC

### Source

Human LAG-3, Llama IgG2b Fc Tag(LA3-H525c) is expressed from human 293 cells (HEK293). It contains AA Leu 23 - Leu 450 (Accession # [P18627-1](#)).

Predicted N-terminus: Leu 23

### Molecular Characterization

LAG-3(Leu 23 - Leu 450) P18627-1	LlamaFc(Glu1 - Ser243) AAX73259.1
-------------------------------------	--------------------------------------

This protein carries a llama IgG2b Fc tag at the C-terminus.

The protein has a calculated MW of 74.0 kDa. The protein migrates as 90 kDa under reducing (R) condition (SDS-PAGE) due to glycosylation.

### Endotoxin

Less than 0.01 EU per µg by the LAL method.

### Purity

>95% as determined by SDS-PAGE.

>90% as determined by SEC-MALS.

### Formulation

Lyophilized from 0.22 µm filtered solution in Tris with Glycine, Arginine and NaCl, pH7.5 with trehalose as protectant.

Contact us for customized product form or formulation.

### Reconstitution

Please see Certificate of Analysis for specific instructions.

*For best performance, we strongly recommend you to follow the reconstitution protocol provided in the CoA.*

### Storage

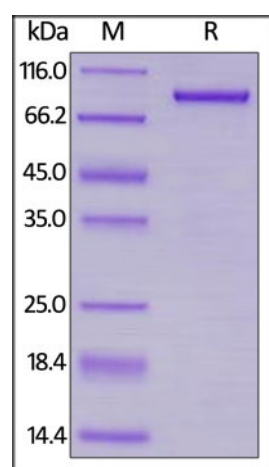
For long term storage, the product should be stored at lyophilized state at -20°C or lower.

*Please avoid repeated freeze-thaw cycles.*

This product is stable after storage at:

- -20°C to -70°C for 12 months in lyophilized state;
- -70°C for 3 months under sterile conditions after reconstitution.

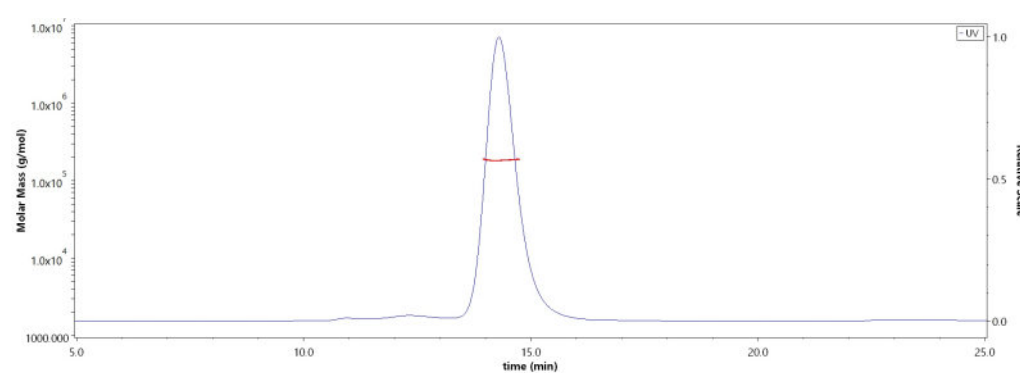
### SDS-PAGE



Human LAG-3, Llama IgG2b Fc Tag on SDS-PAGE under reducing (R) condition. The gel was stained with Coomassie Blue. The purity of the protein is greater than 95%.

### Bioactivity-ELISA

### SEC-MALS

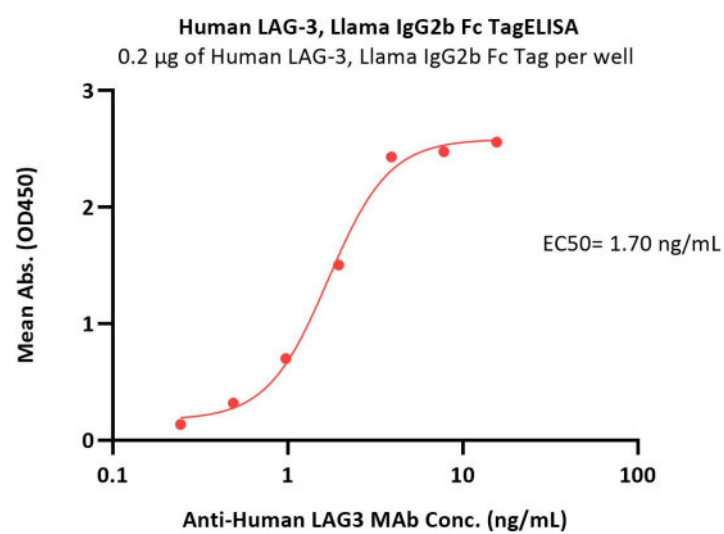


The purity of Human LAG-3, Llama IgG2b Fc Tag (Cat. No. LA3-H525c) is more than 90% and the molecular weight of this protein is around 160-190 kDa verified by SEC-MALS.

[Report](#)

Discounts, Gifts,  
and more!





Immobilized Human LAG-3, Llama IgG2b Fc Tag (Cat. No. LA3-H525c) at 2 µg/mL (100 µL/well) can bind Anti-Human LAG3 MAb with a linear range of 0.2-4 ng/mL (QC tested).

## Background

Lymphocyte activation gene 3 protein (LAG3) is also known as CD antigen CD223 and protein FDC, which belongs to immunoglobulin (Ig) superfamily and contains 4 extracellular Ig-like domains. The LAG3 gene contains 8 exons. The sequence data, exon/intron organization, and chromosomal localization all indicate a close relationship of LAG3 to CD4. LAG3 /CD223 involved in lymphocyte activation. LAG3 /CD223 binds to HLA class-II antigens.

## Clinical and Translational Updates

Discounts, Gifts,  
and more!

