



Synonym

LAG3,CD223,FDC

Source

Cynomolgus LAG-3, Mouse IgG2a Fc tag(LA3-C52A0) is expressed from human 293 cells (HEK293). It contains AA Ala 18 - His 449 (Accession # [XP_005570011.1](#)).

Predicted N-terminus: Ala 18

Molecular Characterization

LAG-3(Ala 18 - His 449) XP_005570011.1	mFc(Glu 98 - Lys 330) P01863
---	---------------------------------

This protein carries a mouse IgG2a Fc tag at the C-terminus.

The protein has a calculated MW of 73.5 kDa. The protein migrates as 95 kDa when calibrated against [Star Ribbon Pre-stained Protein Marker](#) under reducing (R) condition (SDS-PAGE) due to glycosylation.

Endotoxin

Less than 1.0 EU per µg by the LAL method.

Purity

>90% as determined by SDS-PAGE.

Formulation

Lyophilized from 0.22 µm filtered solution in Tris with Glycine, Arginine and NaCl, pH7.5 with trehalose as protectant.

Contact us for customized product form or formulation.

Reconstitution

Please see Certificate of Analysis for specific instructions.

For best performance, we strongly recommend you to follow the reconstitution protocol provided in the CoA.

Storage

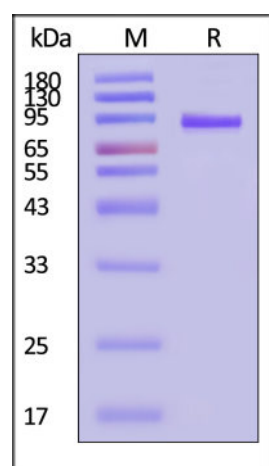
For long term storage, the product should be stored at lyophilized state at -20°C or lower.

Please avoid repeated freeze-thaw cycles.

This product is stable after storage at:

- -20°C to -70°C for 12 months in lyophilized state;
- -70°C for 3 months under sterile conditions after reconstitution.

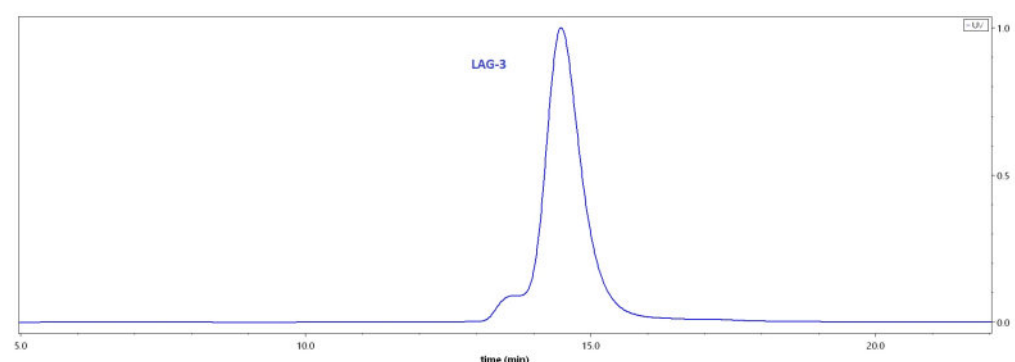
SDS-PAGE



Cynomolgus LAG-3, Mouse IgG2a Fc tag on SDS-PAGE under reducing (R) condition. The gel was stained with Coomassie Blue. The purity of the protein is greater than 90% (With [Star Ribbon Pre-stained Protein Marker](#)).

Bioactivity-ELISA

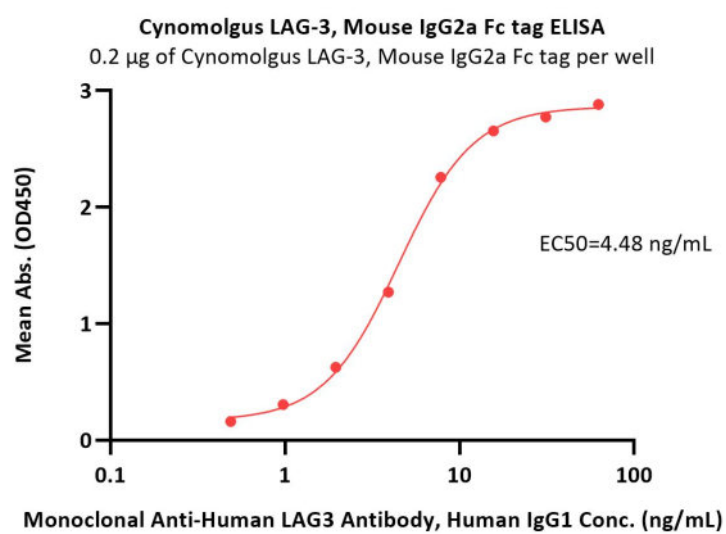
SEC-HPLC



The purity of Cynomolgus LAG-3, Mouse IgG2a Fc tag (Cat. No. LA3-C52A0) was greater than 85% as determined by SEC-HPLC.

Discounts, Gifts,
and more!





Immobilized Cynomolgus LAG-3, Mouse IgG2a Fc tag (Cat. No. LA3-C52A0) at 2 µg/mL (100 µL/well) can bind Monoclonal Anti-Human LAG3 Antibody, Human IgG1 with a linear range of 0.5-8 ng/mL (QC tested).

Background

Lymphocyte activation gene 3 protein (LAG3) is also known as CD antigen CD223 and protein FDC, which belongs to immunoglobulin (Ig) superfamily and contains 4 extracellular Ig-like domains. The LAG3 gene contains 8 exons. The sequence data, exon/intron organization, and chromosomal localization all indicate a close relationship of LAG3 to CD4. LAG3 /CD223 involved in lymphocyte activation. LAG3 /CD223 binds to HLA class-II antigens.

Clinical and Translational Updates

Discounts, Gifts,
and more!

