



Source

HHV-5 (strain AD169) Glycoprotein H&L, His Tag(GHL-H5243) is expressed from human 293 cells (HEK293). It contains AA Val 31 - Arg 278 & Arg 24 - Leu 720 (Accession # [P12824](#) & [P16832](#)).

Predicted N-terminus: His

Molecular Characterization

This protein carries a polyhistidine tag at the N-terminus.

The protein has a calculated MW of 109.5 kDa. The protein migrates as 110-130 kDa when calibrated against [Star Ribbon Pre-stained Protein Marker](#) under reducing (R) condition (SDS-PAGE) due to glycosylation.

Endotoxin

Less than 1.0 EU per µg by the LAL method.

Purity

>90% as determined by SDS-PAGE.

>90% as determined by SEC-MALS.

Formulation

Lyophilized from 0.22 µm filtered solution in PBS, pH7.4 with trehalose as protectant.

Contact us for customized product form or formulation.

Reconstitution

Please see Certificate of Analysis for specific instructions.

For best performance, we strongly recommend you to follow the reconstitution protocol provided in the CoA.

Storage

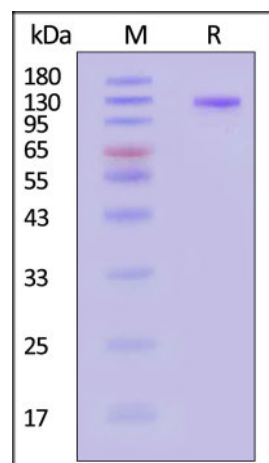
For long term storage, the product should be stored at lyophilized state at -20°C or lower.

Please avoid repeated freeze-thaw cycles.

This product is stable after storage at:

- -20°C to -70°C for 12 months in lyophilized state;
- -70°C for 3 months under sterile conditions after reconstitution.

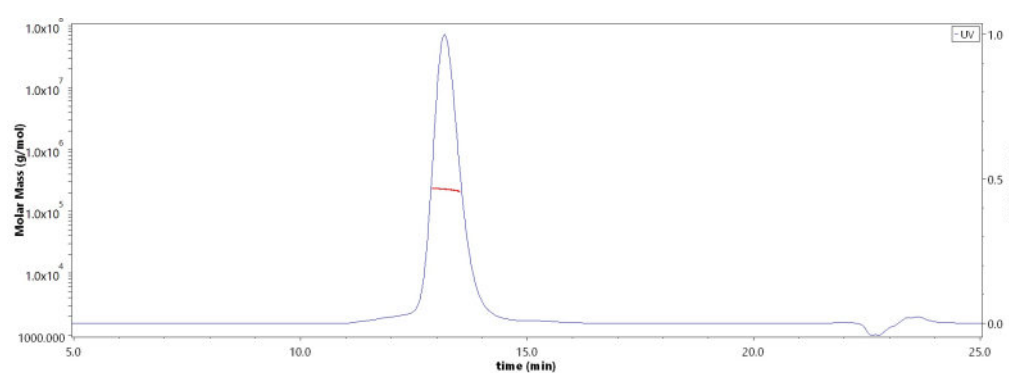
SDS-PAGE



HHV-5 (strain AD169) Glycoprotein H&L, His Tag on SDS-PAGE under reducing (R) condition. The gel was stained with Coomassie Blue. The purity of the protein is greater than 90% (With [Star Ribbon Pre-stained Protein Marker](#)).

Bioactivity-ELISA

SEC-MALS



The purity of HHV-5 (strain AD169) Glycoprotein H&L, His Tag (Cat. No. GHL-H5243) is more than 90% and the molecular weight of this protein is around 210-250 kDa verified by SEC-MALS.

[Report](#)

Discounts, Gifts,
and more!

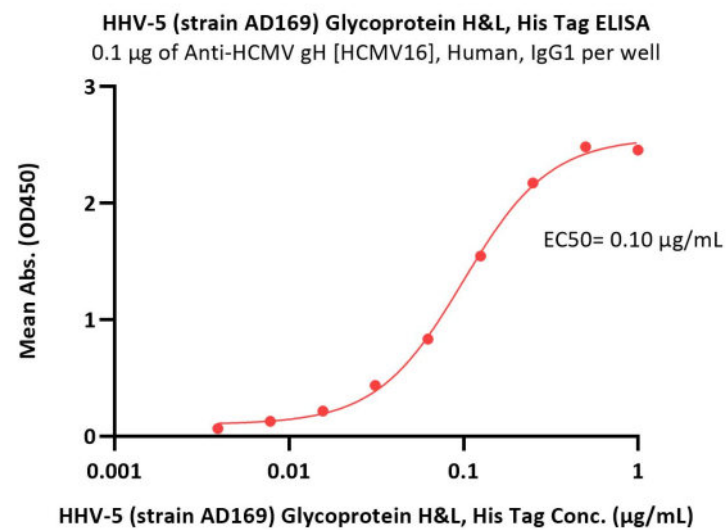
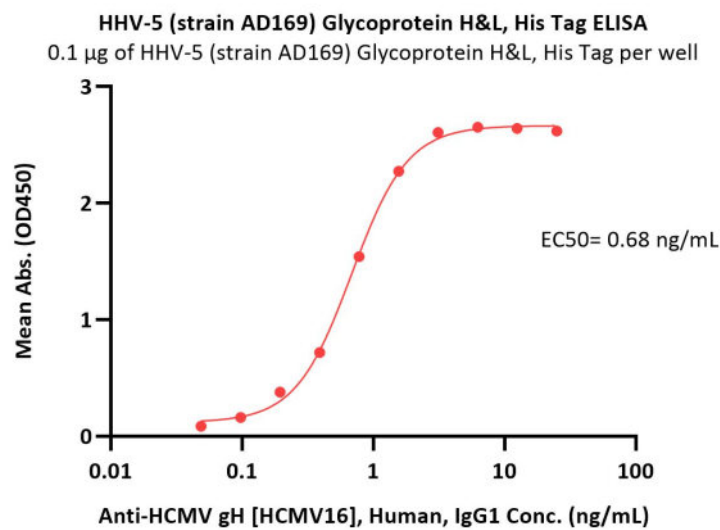


HHV-5 (strain AD169) Glycoprotein H&L, His Tag (MALS verified)

Catalog # GHL-H5243



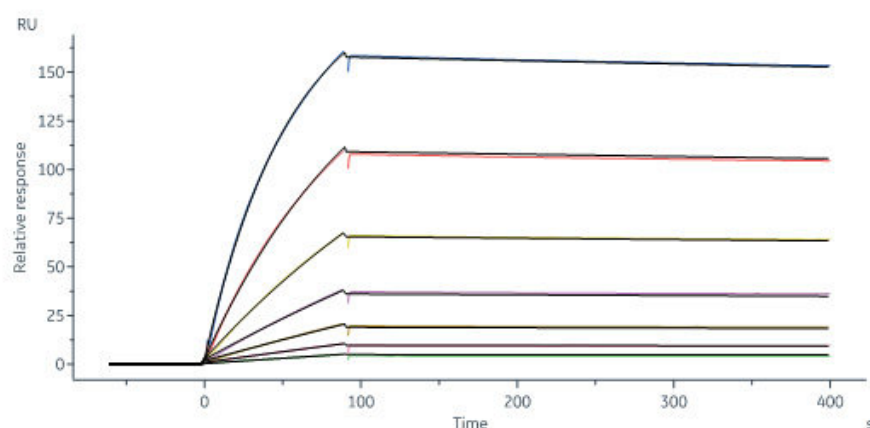
BIOSYSTEMS
Acro



Immobilized HHV-5 (strain AD169) Glycoprotein H&L, His Tag (Cat. No. GHL-H5243) at 1 µg/mL (100 µL/well) can bind Anti-HCMV gH [HCMV16], Human, IgG1 with a linear range of 0.1-2 ng/mL (QC tested).

Immobilized Anti-HCMV gH [HCMV16], Human, IgG1 at 1 µg/mL (100 µL/well) can bind HHV-5 (strain AD169) Glycoprotein H&L, His Tag (Cat. No. GHL-H5243) with a linear range of 0.004-0.25 µg/mL (Routinely tested).

Bioactivity-SPR



Anti-HCMV gH [HCMV16] captured on Protein A Chip can bind HHV-5 (strain AD169) Glycoprotein H&L, His Tag (Cat. No. GHL-H5243) with an affinity constant of 1.49 nM as determined in a SPR assay (Biacore 8K) (Routinely tested).

Background

Human cytomegalovirus (HCMV), a prototypical beta-herpes virus, is a major cause of morbidity and mortality in immunocompromised transplant recipients and congenitally infected fetuses. Different HCMV glycoprotein complexes are capable of mediating entry through interaction with cell-specific receptors on a panel of host cells. The pentamer (gH/gL/UL128/UL130/UL131A) mediates HCMV entry into epithelial, endothelial, and myeloid cells by its binding to neuropilin 2 (Nrp2). The trimer (gH/gL/gO) can mediate infection of all cell types by binding to platelet-derived growth factor-alpha (PDGFR α). Both pentamer and trimer need to interact with the glycoprotein B (gB), the fusogenic protein, to trigger the virus and host cell membrane fusion.

Clinical and Translational Updates

Discounts, Gifts,
and more!

