



**Source**

Rabbit

**Isotype**

Rabbit IgG

**Conjugate**

Unconjugated

**Specificity**

This product is a specific antibody specifically reacts with GFAP.

**Purification**

Protein A purified/ Protein G purified

**Formulation**

Supplied as 0.2 µm filtered solution in undefined.

Contact us for customized product form or formulation.

**Shipping**

*This product is supplied and shipped with blue ice, please inquire the shipping cost.*

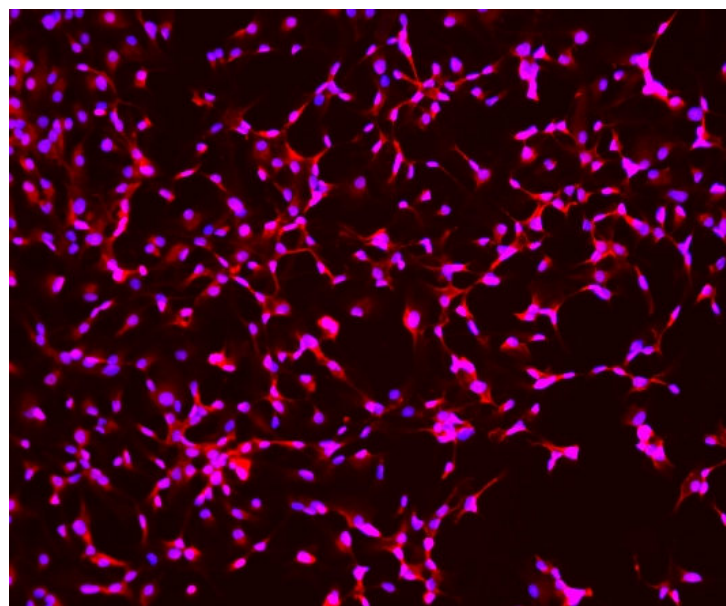
**Storage**

*Please avoid repeated freeze-thaw cycles.*

This product is stable after storage at:

- Shipped at 4°C. Store at -20/4°C for months and -80°C for years. Avoid freeze/thaw cycle.

**Immunostaining**



Immunofluorescent staining (10X) of cerebral organoid-derived cells (CIPO-BWL001K) labeling GFAP (Red) with purified GFP-S453 at 1:200 dilution. DAPI (blue) was used as nuclear counterstain.

**Background**

The glial fibrillary acidic protein (GFAP) is the main intermediate filament protein in mature astrocytes, but also an important component of the cytoskeleton in astrocytes during development. GFAP has been shown to be involved in astrocyte functions, which are important during regeneration, synaptic plasticity and reactive gliosis. It is used as a marker to distinguish astrocytes from other glial cells during development.

**Clinical and Translational Updates**

Discounts, Gifts,  
and more!

