



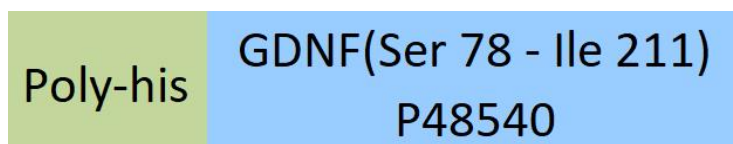
**Synonym**

GDNF,ATF

**Source**

Mouse GDNF, His Tag(GDF-M5245) is expressed from human 293 cells (HEK293). It contains AA Ser 78 - Ile 211 (Accession # [P48540](#)).

**Molecular Characterization**



This protein carries a polyhistidine tag at the N-terminus.

The protein has a calculated MW of 17.0 kDa. The protein migrates as 16 kDa, 18 kDa and 22-24 kDa under reducing (R) condition (SDS-PAGE) due to glycosylation.

**Endotoxin**

Less than 0.1 EU per µg by the LAL method.

**Sterility**

Negative

**Mycoplasma**

Negative.

**Purity**

>90% as determined by SDS-PAGE.

>90% as determined by SEC-MALS.

**Formulation**

Lyophilized from 0.22 µm filtered solution in PBS, pH7.4 with trehalose as protectant.

Contact us for customized product form or formulation.

**Reconstitution**

Please see Certificate of Analysis for specific instructions.

*For best performance, we strongly recommend you to follow the reconstitution protocol provided in the CoA.*

**Storage**

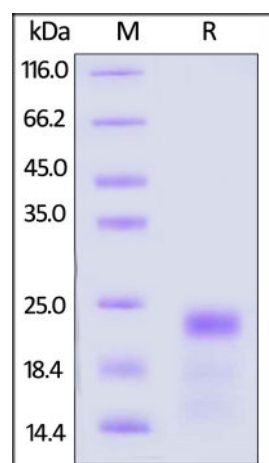
For long term storage, the product should be stored at lyophilized state at -20°C or lower.

*Please avoid repeated freeze-thaw cycles.*

This product is stable after storage at:

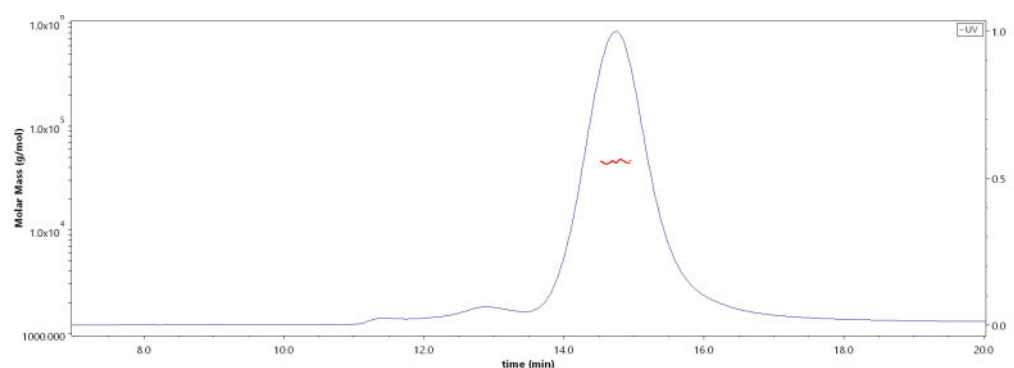
- -20°C to -70°C for 12 months in lyophilized state;
- -70°C for 3 months under sterile conditions after reconstitution.

**SDS-PAGE**



Mouse GDNF, His Tag on SDS-PAGE under reducing (R) condition. The gel was stained with Coomassie Blue. The purity of the protein is greater than 90%.

**SEC-MALS**



The purity of Mouse GDNF, His Tag (Cat. No. GDF-M5245) is more than 90% and the molecular weight of this protein is around 40-50 kDa verified by SEC-MALS.

[Report](#)

Discounts, Gifts,  
and more!





## Background

Glial cell line-derived neurotrophic factor (GDNF) is a glycosylated, disulfide-bonded homodimer that is a distantly related member of the transforming growth factor-beta (TGF-beta) superfamily. It potently promotes the survival of peripheral and central neurons. It signals through GFR $\alpha$  receptors, particularly GFR $\alpha$ 1. Neuronal subpopulations that have been shown to be affected by GDNF include motoneurons, midbrain dopaminergic neurons, Purkinje cells and sympathetic neurons.

## Clinical and Translational Updates

Discounts, Gifts,  
and more!

