

# Monoclonal Anti-Eribulin Antibody, Rabbit IgG (1M1F5)

Catalog # ERN-MY2062b



## Source

Monoclonal Anti-Eribulin Antibody, Rabbit IgG (1M1F5) is a Rabbit monoclonal antibody recombinantly expressed from HEK293 cells.

## Clone

1M1F5

## Species

Rabbit

## Isotype

Rabbit IgG | Rabbit Kappa

## Antibody Type

Recombinant Monoclonal

## Reactivity

Chemical

## Specificity

This product is a specific antibody specifically reacts with Eribulin.

## Application

Application	Recommended Usage
ELISA	0.2-125 ng/mL

## Purity

>95% as determined by SDS-PAGE.

## Purification

Protein A purified/ Protein G purified

## Formulation

Lyophilized from 0.22  $\mu$ m filtered solution in PBS, pH7.4 with trehalose as protectant.

Contact us for customized product form or formulation.

## Reconstitution

Please see Certificate of Analysis for specific instructions.

*For best performance, we strongly recommend you to follow the reconstitution protocol provided in the CoA.*

## Storage

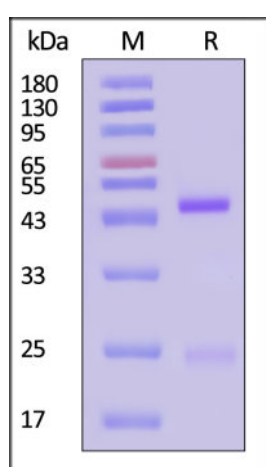
For long term storage, the product should be stored at lyophilized state at  $-20^{\circ}\text{C}$  or lower.

*Please avoid repeated freeze-thaw cycles.*

This product is stable after storage at:

- $-20^{\circ}\text{C}$  to  $-70^{\circ}\text{C}$  for 12 months in lyophilized state;
- $-70^{\circ}\text{C}$  for 3 months under sterile conditions after reconstitution.

## SDS-PAGE



Monoclonal Anti-Eribulin Antibody, Rabbit IgG (1M1F5) on SDS-PAGE under reducing (R) condition. The gel was stained with Coomassie Blue. The purity of the protein is greater than 95% (With [Star Ribbon Pre-stained Protein Marker](#)).

## Bioactivity-ELISA

Discounts, Gifts,  
and more!



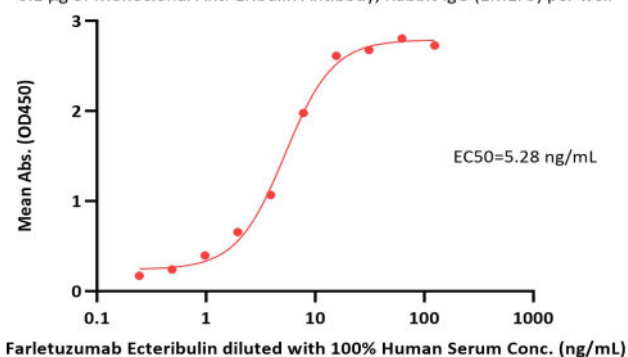
# Monoclonal Anti-Eribulin Antibody, Rabbit IgG (1M1F5)

Catalog # ERN-MY2062b

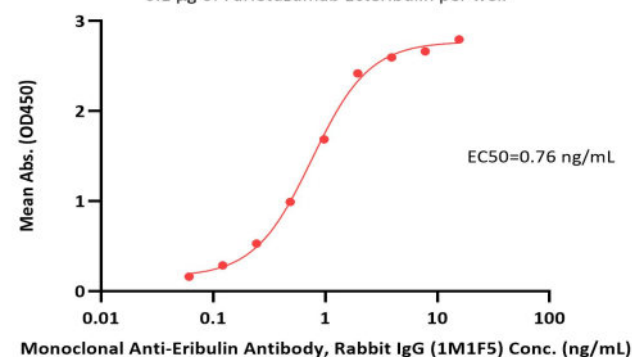


BIOSYSTEMS  
**Acro**

Monoclonal Anti-Eribulin Antibody, Rabbit IgG (1M1F5)-Bridging ELISA  
0.1 µg of Monoclonal Anti-Eribulin Antibody, Rabbit IgG (1M1F5) per well



Monoclonal Anti-Eribulin Antibody, Rabbit IgG (1M1F5) ELISA  
0.1 µg of Farletuzumab Ecteribulin per well



Immobilized Monoclonal Anti-Eribulin Antibody, Rabbit IgG (1M1F5) (Cat. No. ERN-MY2062b) at 1 µg/mL, add Farletuzumab Ecteribulin in the 100% Human Serum and then add Biotinylated Human FOLR1, Fc, Avitag (Cat. No. FO1-H82F9) at 0.5 µg/mL. Detection was performed using HRP-conjugated Streptavidin (Acro, Cat. No. STN-NH913) (QC tested).

Immobilized Farletuzumab Ecteribulin at 1 µg/mL (100 µL/well) can bind Monoclonal Anti-Eribulin Antibody, Rabbit IgG (1M1F5) (Cat. No. ERN-MY2062b) with a linear range of 0.06-2 ng/mL (QC tested).

## Background

Eribulin is a synthetic analogue of the macrocyclic polyether halichondrin B, which was originally isolated from the Asian sea sponge *Halichondria okadai*. Eribulin binds specifically to the  $\beta$ -tubulin subunit on the (+) end of the microtubule and potently inhibits elongation of the formed microtubule, while having little or no effect on microtubule depolymerization. Eribulin's potent antimetabolic activity and nonmitotic effects on tumor biology make it an interesting candidate for investigation as a MTA payload for ADCs.

## Clinical and Translational Updates

Discounts, Gifts,  
and more!



[www.acrobiosystems.com](http://www.acrobiosystems.com)

9/10/2024