



Synonym

CCL1,I-309,C-C motif chemokine 1

Source

Human CCL1 / I-309 Protein, Mouse IgG2a Fc Tag(CC1-H5253) is expressed from human 293 cells (HEK293). It contains AA Lys 24 - Lys 96 (Accession # [P22362-1](#)).

Predicted N-terminus: Lys 24

Molecular Characterization

CCL1(Lys 24 - Lys 96) P22362-1	mFc(Glu 98 - Lys 330) P01863
-----------------------------------	---------------------------------

This protein carries a mouse IgG2a Fc tag at the C-terminus. The protein has a calculated MW of 35.4 kDa. The protein migrates as 42-45 kDa under reducing (R) condition (SDS-PAGE) due to glycosylation.

Endotoxin

Less than 1.0 EU per µg by the LAL method.

Purity

>90% as determined by SDS-PAGE.

Formulation

Lyophilized from 0.22 µm filtered solution in PBS, pH7.4 with trehalose as protectant.

Contact us for customized product form or formulation.

Reconstitution

Please see Certificate of Analysis for specific instructions.

For best performance, we strongly recommend you to follow the reconstitution protocol provided in the CoA.

Storage

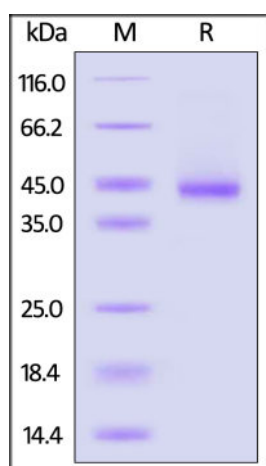
For long term storage, the product should be stored at lyophilized state at -20°C or lower.

Please avoid repeated freeze-thaw cycles.

This product is stable after storage at:

- -20°C to -70°C for 12 months in lyophilized state;
- -70°C for 3 months under sterile conditions after reconstitution.

SDS-PAGE

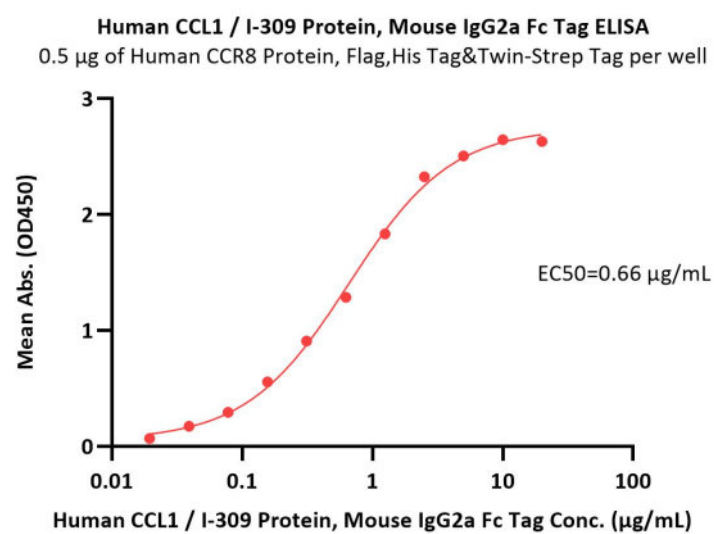


Human CCL1 / I-309 Protein, Mouse IgG2a Fc Tag on SDS-PAGE under reducing (R) condition. The gel was stained with Coomassie Blue. The purity of the protein is greater than 90%.

Bioactivity-ELISA

Discounts, Gifts,
and more!





Immobilized Human CCR8 Protein, Flag,His Tag&Twin-Strep Tag (Cat. No. CC8-H52D6) at 5 μ g/mL (100 μ L/well) can bind Human CCL1 / I-309 Protein, Mouse IgG2a Fc Tag (Cat. No. CC1-H5253) with a linear range of 0.02-2.5 μ g/mL (Routinely tested).

Background

Chemokines form a superfamily of secreted proteins involved in immunoregulatory and inflammatory processes. The superfamily is divided into four subfamilies based on the arrangement of the N-terminal cysteine residues of the mature peptide. CCL1, a member of the CC subfamily, is secreted by activated T cells and displays chemotactic activity for monocytes but not for neutrophils. It binds to the chemokine (C-C motif) receptor 8.

Clinical and Translational Updates

Discounts, Gifts,
and more!

