



### Synonym

CA125,CA-125,CA125MUC-16,FLJ14303,MUC16,mucin 16,mucin-16

### Source

Human CA125 (13810-14451), His Tag(CA5-H52H6) is expressed from human 293 cells (HEK293). It contains AA Pro 13810 - Pro 14451 (Accession # [Q8WXI7-1](#)).

Predicted N-terminus: Pro 13810

### Molecular Characterization

CA125(Pro 13810 - Pro 14451) Q8WXI7-1	Poly-his
--	----------

This protein carries a polyhistidine tag at the C-terminus.

The protein has a calculated MW of 73.7 kDa. The protein migrates as 90-130 kDa when calibrated against [Star Ribbon Pre-stained Protein Marker](#) under reducing (R) condition (SDS-PAGE) due to glycosylation.

### Endotoxin

Less than 0.1 EU per µg by the LAL method.

### Purity

>95% as determined by SDS-PAGE.

>90% as determined by SEC-MALS.

### Formulation

Lyophilized from 0.22 µm filtered solution in PBS, pH7.4 with trehalose as protectant.

Contact us for customized product form or formulation.

### Reconstitution

Please see Certificate of Analysis for specific instructions.

*For best performance, we strongly recommend you to follow the reconstitution protocol provided in the CoA.*

### Storage

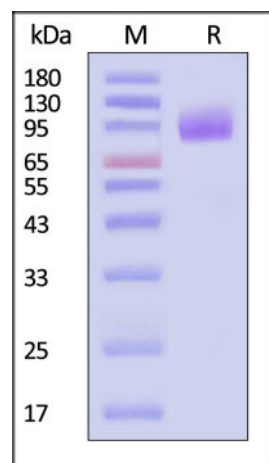
For long term storage, the product should be stored at lyophilized state at -20°C or lower.

*Please avoid repeated freeze-thaw cycles.*

This product is stable after storage at:

- -20°C to -70°C for 12 months in lyophilized state;
- -70°C for 3 months under sterile conditions after reconstitution.

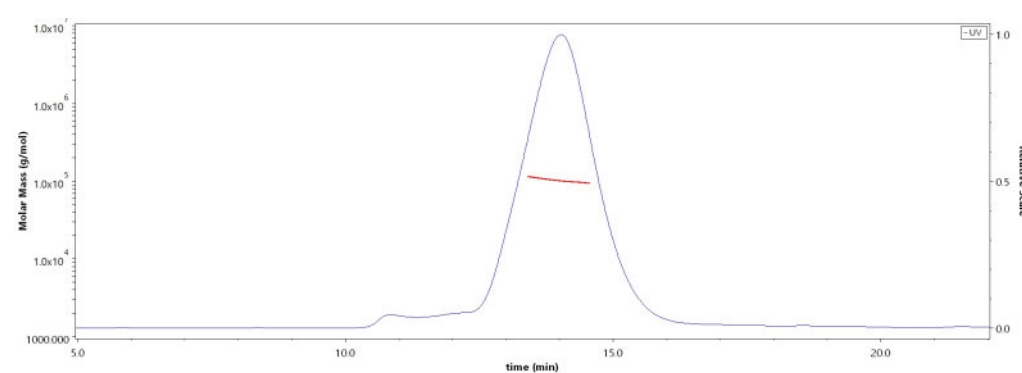
### SDS-PAGE



Human CA125 (13810-14451), His Tag on SDS-PAGE under reducing (R) condition. The gel was stained with Coomassie Blue. The purity of the protein is greater than 95% (With [Star Ribbon Pre-stained Protein Marker](#)).

### Bioactivity-ELISA

### SEC-MALS

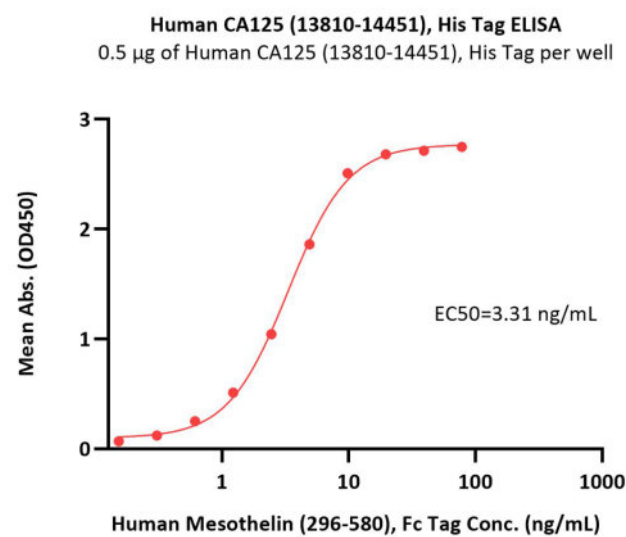


The purity of Human CA125 (13810-14451), His Tag (Cat. No. CA5-H52H6) is more than 90% and the molecular weight of this protein is around 85-115 kDa verified by SEC-MALS.

[Report](#)

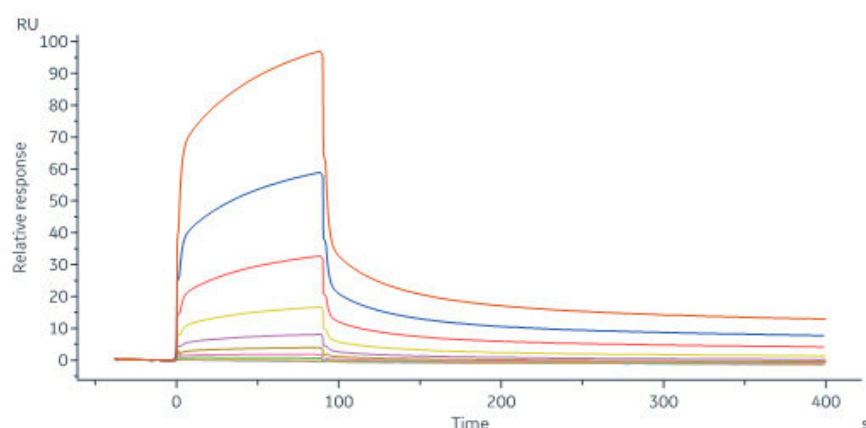
Discounts, Gifts,  
and more!





Immobilized Human CA125 (13810-14451), His Tag (Cat. No. CA5-H52H6) at 5 µg/mL (100 µL/well) can bind Human Mesothelin (296-580), Fc Tag (Cat. No. MSN-H5253) with a linear range of 0.2-10 ng/mL (QC tested).

### Bioactivity-SPR



Human Mesothelin (296-580), His Tag, premium grade (Cat. No. MSN-H522a) immobilized on CM5 Chip can bind Human CA125 (13810-14451), His Tag (Cat. No. CA5-H52H6) with an affinity constant of 1.82 µM as determined in a SPR assay (Biacore 8K) (Routinely tested).

### Background

The CA125, also known as the MUC16, is a mucin protein that may be found in type I transmembrane or secreted forms that are used monitor the progress of epithelial ovarian cancer therapy. The CA 125 molecule is almost certainly a glycoprotein with a predominance of O-linkages. It is heterogeneous with regard to both size and charge, most likely due to continuous deglycosylation of side chains during its life-span in bodily fluids. It exists as a very large complex (perhaps as much as 4 million daltons) under natural conditions.

### Clinical and Translational Updates

Discounts, Gifts,  
and more!

