



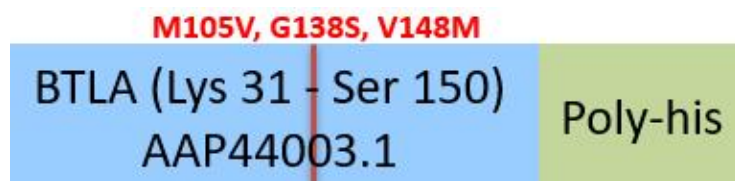
Synonym

BTLA,CD272

Source

Human BTLA (31-150) (M105V, G138S, V148M), His Tag(BTA-H52H5) is expressed from human 293 cells (HEK293). It contains AA Lys 31 - Ser 150 (Accession # [AAP44003.1](#) (M105V, G138S, V148M)).

Molecular Characterization



This protein carries a polyhistidine tag at the C-terminus.

The protein has a calculated MW of 15.8 kDa. The protein migrates as 27-33 kDa under reducing (R) condition (SDS-PAGE) due to glycosylation.

Endotoxin

Less than 1.0 EU per µg by the LAL method.

Purity

>90% as determined by SDS-PAGE.

>90% as determined by SEC-MALS.

Formulation

Lyophilized from 0.22 µm filtered solution in PBS, pH7.4 with trehalose as protectant.

Contact us for customized product form or formulation.

Reconstitution

Please see Certificate of Analysis for specific instructions.

For best performance, we strongly recommend you to follow the reconstitution protocol provided in the CoA.

Storage

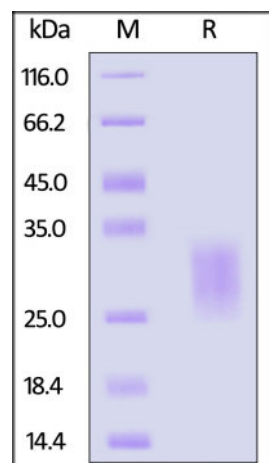
For long term storage, the product should be stored at lyophilized state at -20°C or lower.

Please avoid repeated freeze-thaw cycles.

This product is stable after storage at:

- -20°C to -70°C for 12 months in lyophilized state;
- -70°C for 3 months under sterile conditions after reconstitution.

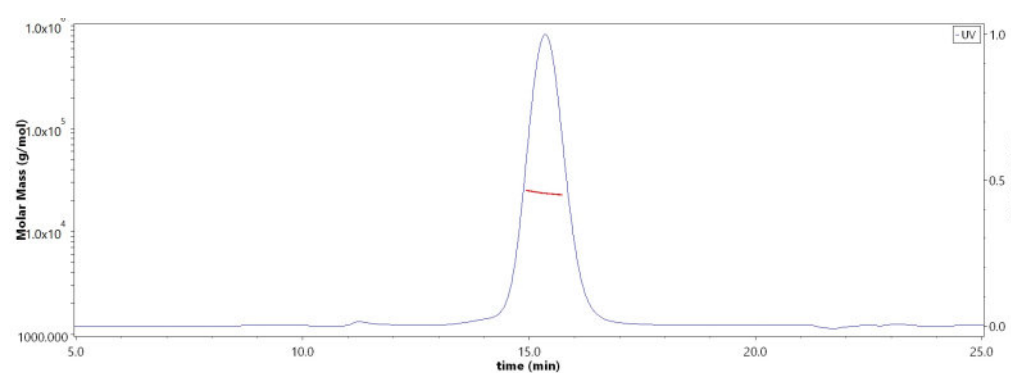
SDS-PAGE



Human BTLA (31-150) (M105V, G138S, V148M), His Tag on SDS-PAGE under reducing (R) condition. The gel was stained with Coomassie Blue. The purity of the protein is greater than 90%.

Bioactivity-ELISA

SEC-MALS

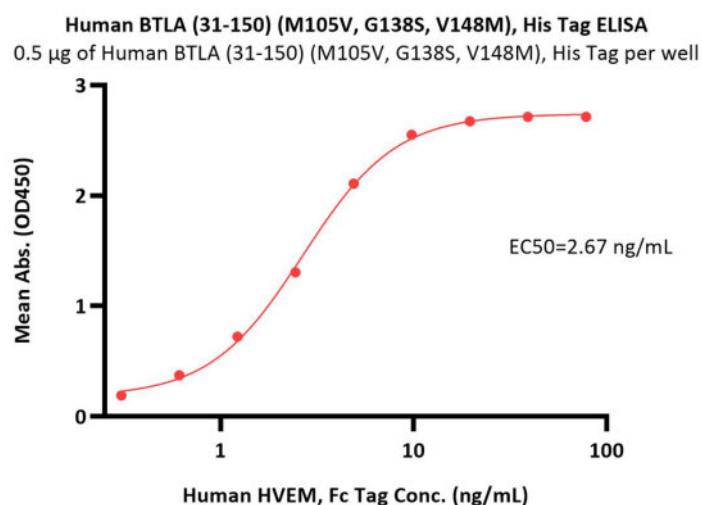


The purity of Human BTLA (31-150) (M105V, G138S, V148M), His Tag (Cat. No. BTA-H52H5) is more than 90% and the molecular weight of this protein is around 19-26 kDa verified by SEC-MALS.

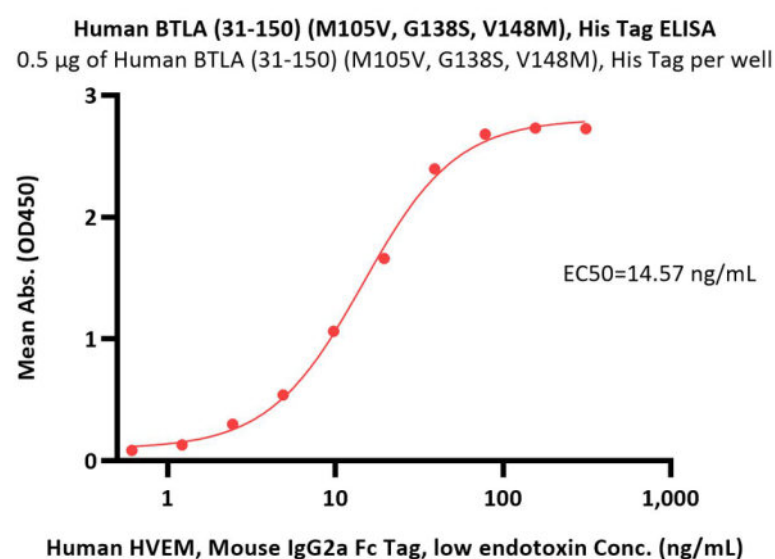
[Report](#)

Discounts, Gifts,
and more!





Immobilized Human BTLA (31-150) (M105V, G138S, V148M), His Tag (Cat. No. BTA-H52H5) at 5 µg/mL (100 µL/well) can bind Human HVEM, Fc Tag (Cat. No. HVM-H5258) with a linear range of 0.6-5 ng/mL (QC tested).



Immobilized Human BTLA (31-150) (M105V, G138S, V148M), His Tag (Cat. No. BTA-H52H5) at 5 µg/mL (100 µL/well) can bind Human HVEM, Mouse IgG2a Fc Tag, low endotoxin with a linear range of 0.6-39 ng/mL (Routinely tested).

Background

B- and T-lymphocyte attenuator (BTLA) is also known as B- and T-lymphocyte-associated protein, CD antigen CD272. BTLA contains one Ig-like V-type (immunoglobulin-like) domain. As a lymphocyte inhibitory receptor, BTLA / CD272 inhibits lymphocytes during immune response. BTLA / CD272 can interact with tyrosine phosphatases PTPN6/SHP-1 and PTPN11/SHP-2, and interact with TNFRSF14/HVEM.

Clinical and Translational Updates

Discounts, Gifts,
and more!

