

Synonym

ANXA5, ANX5, ENX2, PP4, Annexin V, Annexin A5

Source

Human Annexin A5, His Tag (AN5-H5123) is expressed from E.coli cells. It contains AA Met 1 - Asp 320 (Accession # [P08758-1](#)).

Predicted N-terminus: Met 1

Molecular Characterization

ANXA5(Met 1 - Asp 320) P08758-1	Poly-his
------------------------------------	----------

This protein carries a polyhistidine tag at the C-terminus.

The protein has a calculated MW of 36.8 kDa. The protein migrates as 35 kDa under reducing (R) condition (SDS-PAGE).

Endotoxin

Less than 1.0 EU per µg by the LAL method.

Purity

>98% as determined by SDS-PAGE.

Formulation

Lyophilized from 0.22 µm filtered solution in PBS, pH7.4. Normally trehalose is added as protectant before lyophilization.

Contact us for customized product form or formulation.

Reconstitution

Please see Certificate of Analysis for specific instructions.

For best performance, we strongly recommend you to follow the reconstitution protocol provided in the CoA.

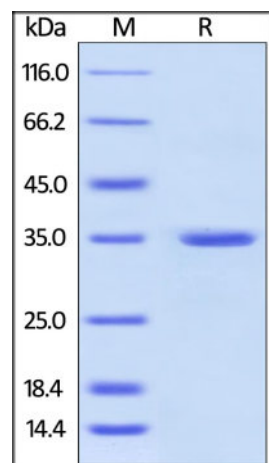
Storage

For long term storage, the product should be stored at lyophilized state at -20°C or lower.

Please avoid repeated freeze-thaw cycles.

This product is stable after storage at:

- -20°C to -70°C for 12 months in lyophilized state;
- -70°C for 3 months under sterile conditions after reconstitution.

SDS-PAGE

Human Annexin A5, His Tag on SDS-PAGE under reducing (R) condition. The gel was stained overnight with Coomassie Blue. The purity of the protein is greater than 98%.

Background

Annexin A5 is a phospholipid binding protein, which binds with high affinity and selectivity to PS in the presence of calcium. PS is predominantly located in membrane leaflets, which face the cytosol. However, recent findings show that each cell type has the molecular machinery to expose PS at its cell surface. This machinery is activated during the execution of apoptosis. Once PS is exposed at the cell surface it exhibits procoagulant and proinflammatory activities. Annexin A5 will bind to the PS-exposing apoptotic cell and can inhibit the procoagulant and proinflammatory activities of the dying cell. Annexin A5 has also been identified as an anticoagulant protein in the blood coagulation cascade, by acting as an inhibitor of prothrombin activation. The presence of antibodies to Annexin A5 is associated with systemic lupus erythematosus (SLE), recurrent spontaneous abortions and systemic sclerosis (SSc).

References

Please contact us via TechSupport@acrobiosystems.com if you have any question on this product.